

# INFINITY8 Camera Series

## Digital Microscope Cameras

High performance compact microscope cameras that provide both monochrome and vivid color images for a wide range of applications

Teledyne Lumenera's INFINITY8 Microscope Camera Series range in resolution from 2MP to 20MP using the latest in advanced CMOS sensor technology for a wide range of imaging applications from low cost fluorescence imaging to ultra high-resolution stereo microscopy. These cameras are designed to provide both performance and value in today's climate of increasingly constrained lab budgets.



### Software

Like all INFINITY Microscope Cameras, INFINITY8 Microscope Cameras include a licence for [INFINITY ANALYZE 7](#), the latest version of Teledyne Lumenera's powerful microscopy software for both brightfield and fluorescence imaging, image stitching, measurements, annotation, time lapse, video clips, and post-processing functions.

### High-Performance

The INFINITY8 series offer several models for microscopy. Providing exceptional low light sensitivity for routine fluorescence, brightfield, darkfield, high-resolution, and high-speed imaging. With both color and monochrome models available. All color models include an IR-cut off filter for higher color fidelity.

### Design

The INFINITY8 microscopy cameras have a sleek new camera body with a heat-dissipating design to reduce noise without the need for expensive cooling or fans. The sensors selected for the new INFINITY8 camera series rival legacy CCD cameras at a fraction of the price.

### Versatility

The INFINITY8 cameras range from monochrome for cost-effective fluorescence imaging to ultra high-resolution color for stereo microscopy - and are compatible with all C-mount microscope brands. Breathe life into your existing microscope by adding a new camera to save time and improve workflow.

INFINITY8 CAMERA SERIES SPECIFICATIONS

	Active Resolution	Sensor Model	Frame Rate**	Pixel Size	Full Well Charge	Read Noise	Dynamic Range	Optical Format	Coupler Magnification	Part Number
 INFINITY8-2M	1608 x 1104	Sony IMX432 (1.7M)	96 fps	9.00 µm	100.4K e- (19.2K e-***)	21.6 e- (4.4 e-***)	72 dB	1.1"	1x	i8-LM00-02M
 INFINITY8-3C	1944 x 1472	Sony IMX429 (2.9M)	62 fps	4.50 µm	24.9K e-	7.2 e-	72 dB	2/3"	0.63x - 0.67x	i8-LC00-03M
 INFINITY8-3M	1944 x 1472	Sony IMX429 (2.9M)	62 fps	4.50 µm	24.9K e-	7.2 e-	72 dB	2/3"	0.63x - 0.67x	i8-LM00-03M
 INFINITY8-8C	3840 x 2160	Sony IMX334 (8.3M)*	44 fps	2.00 µm	7.03K e-	2.0 e-	73 dB	1/1.8"	05x - 0.63x	i8-LC00-08M
 INFINITY8-8M	3840 x 2160	Sony IMX334 (8.3M)*	44 fps	2.00 µm	7.03K e-	2.0 e-	73 dB	1/1.8"	05x - 0.63x	i8-LM00-08M
 INFINITY8-9C	4112 x 2176	Sony IMX267 (8.9M)	31 fps	3.45 µm	10.6K e-	2.3 e-	73.3 dB	1"	1x	i8-LC00-09M
 INFINITY8-9M	4112 x 2176	Sony IMX267 (8.9M)	31 fps	3.45 µm	10.6K e-	2.3 e-	73.3 dB	1"	1x	i8-LM00-09M
 INFINITY8-20C	5472 x 3648	Sony IMX183 (20M)*	19 fps	2.40 µm	14.6K e-	3.25 e-	73 dB	1"	1x	i8-LC00-20M

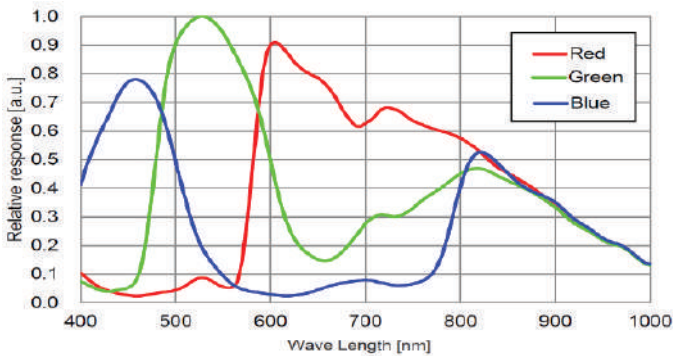
\* Rolling Shutter sensors  
\*\* Maximum sustainable FPS  
\*\*\* High Conversion Gain (HCG) mode

INFINITY8 CAMERA SERIES SPECIFICATIONS  
(COMMON TO ALL MODELS)

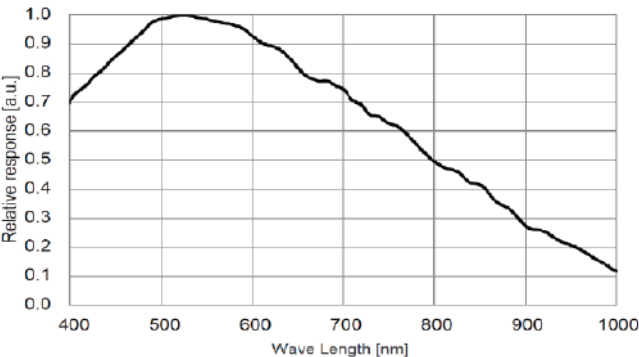
INFINITY8 Microscopy Cameras	
Camera Interface	USB3.1 (5 Gbit/s)
Exposure Control	Manual and automatic control
Data Format	8 or 12-bit
I/O Ports	Support for input trigger and strobe out
Image Buffer	128 MB
Lens Mount	C mount
Size (L x H x W)	41.5 mm (max) x 45 mm x 45 mm
Mass	108 g
Operating Temp	0 to 50 °C
Power Supply	5V via Power Over USB3 Cable
Power Dissipation	2.3 W to 3.6 W
Data Connector	USB3 Type micro-B (Locking Connector supported)
I/O Connector	JST# SM09B-NSHSS-TB (mating part: JST # NSHR-09V-S), GPIO cable available as an accessory
Software Platform	Teledyne Lumenera INFINITY ANALYZE 7, supported on both Windows and Mac, supported third-party plug-ins for MetaMorph and MicroManager
Included In The Box	INFINITY Microscope Camera, USB3 Micro-B to Type-A Cable (3 Meter/ 9.75 feet)

RESPONSIVITY GRAPHS

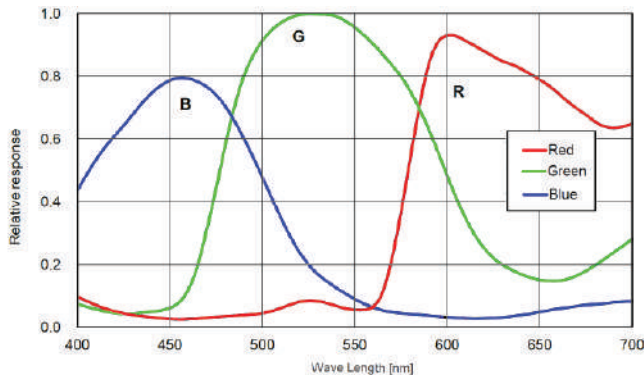
INFINITY8-8 Color



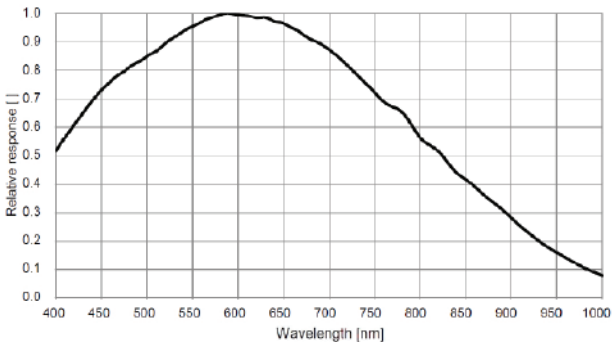
INFINITY8-8 Mono



INFINITY8-20 Color

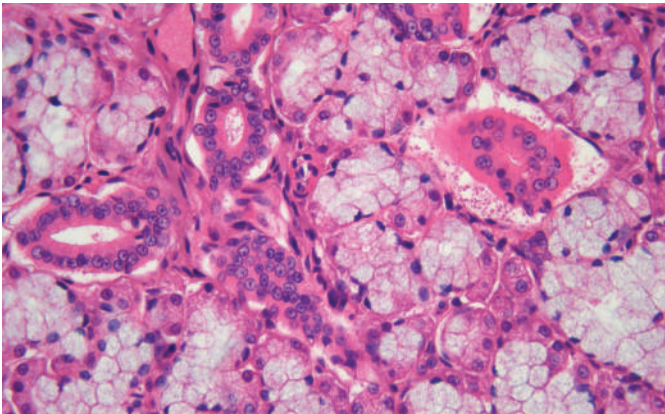


INFINITY8-2 Mono

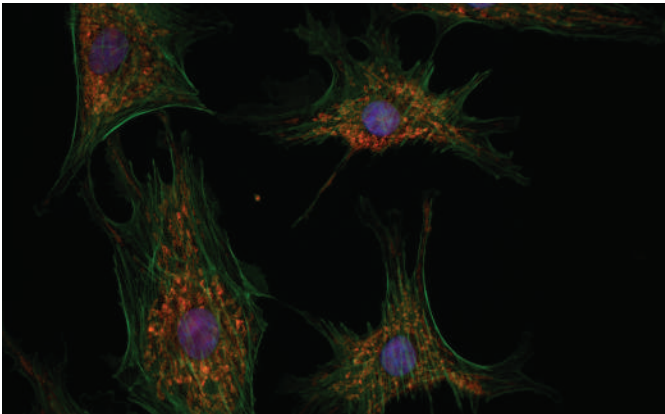


IMAGES CAPTURED WITH INFINITY8 CAMERAS

40X magnification with an INFINITY8-8C

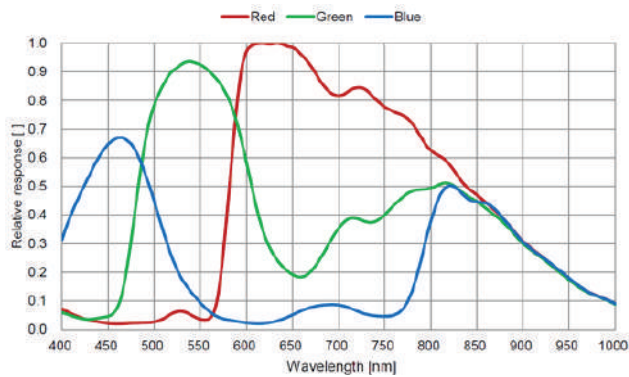


60X magnification with an INFINITY8-2M

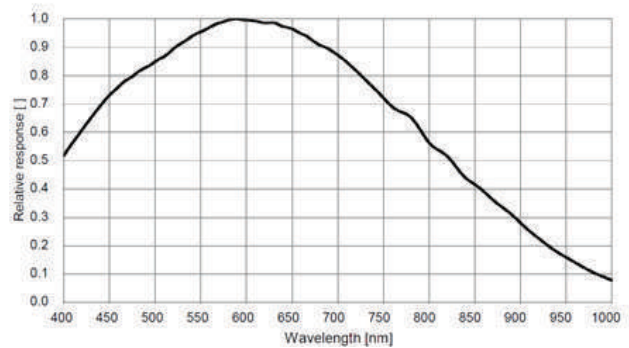


RESPONSIVITY GRAPHS

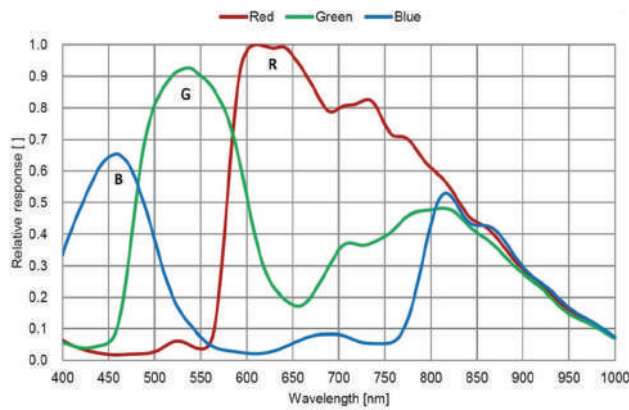
INFINITY8-3 Color



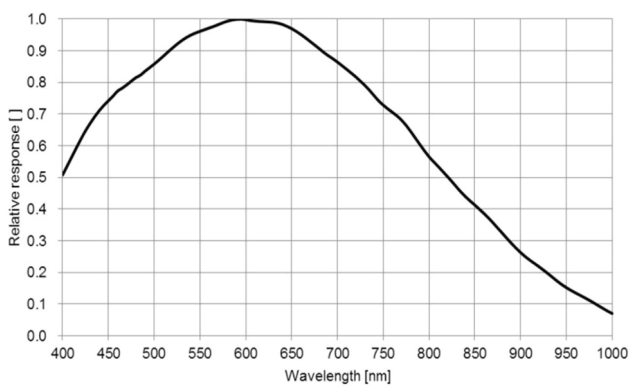
INFINITY8-3 Mono



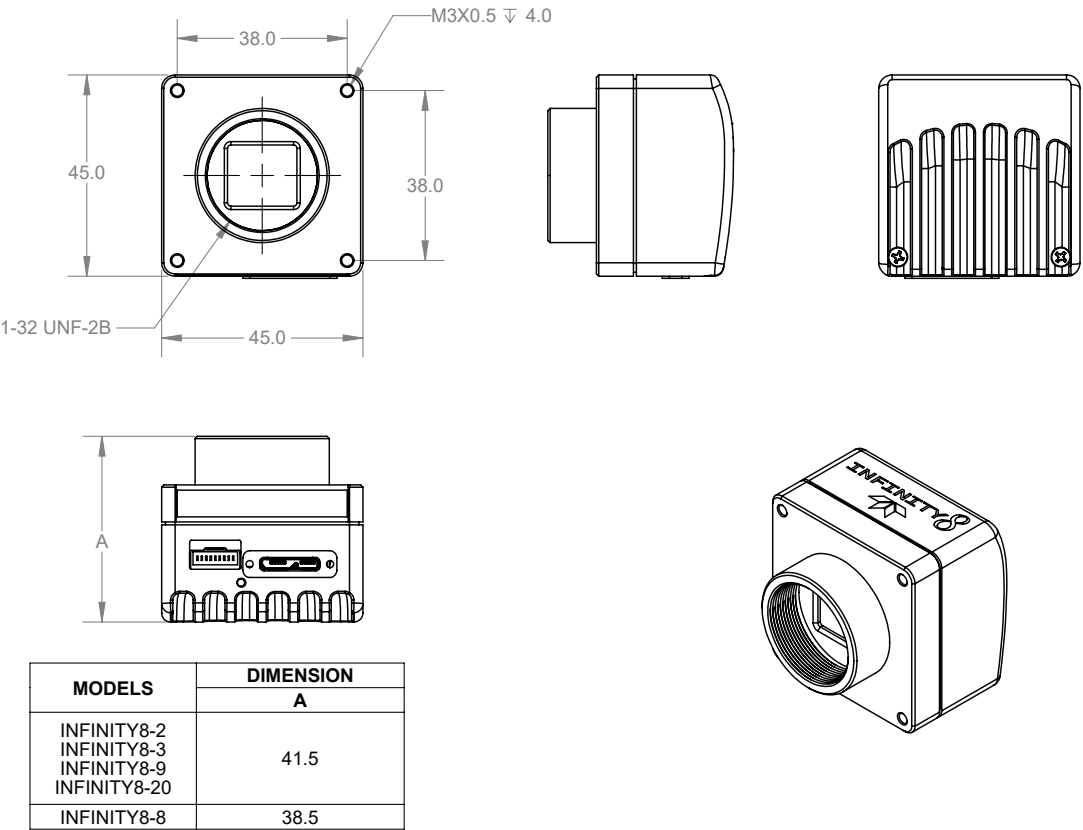
INFINITY8-9 Color



INFINITY8-9 Mono



# INFINITY8 Camera Series Specifications



[www.teledynevisionsolutions.com](http://www.teledynevisionsolutions.com)

**North America**  
 12051 Riverside Way  
 Richmond, BC, Canada  
 V6W 1K7  
 Phone: +1 866.765.0827 (toll free)

© 2024 Teledyne Lumenera. All rights reserved.  
 Design, features, and specifications are subject to change without notice. 20241203





# Microscopy cameras featuring Sony Pregius & Starvis sensors

[www.teledynevisionsolutions.com](http://www.teledynevisionsolutions.com)

---

**North America**

12051 Riverside Way  
Richmond, BC, Canada  
V6W 1K7  
Phone: +1 866.765.0827 (toll free)

© 2024 Teledyne Lumenera. All rights reserved.  
Design, features, and specifications are subject to change without notice. 20241203

