

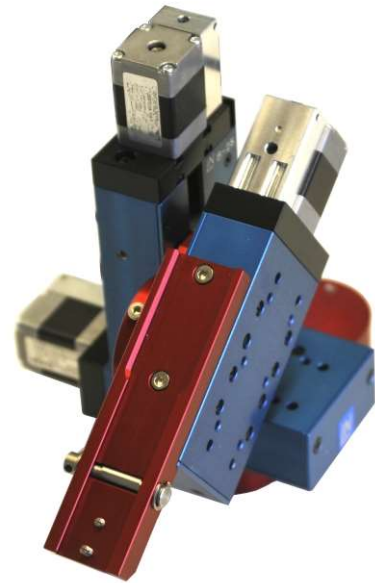
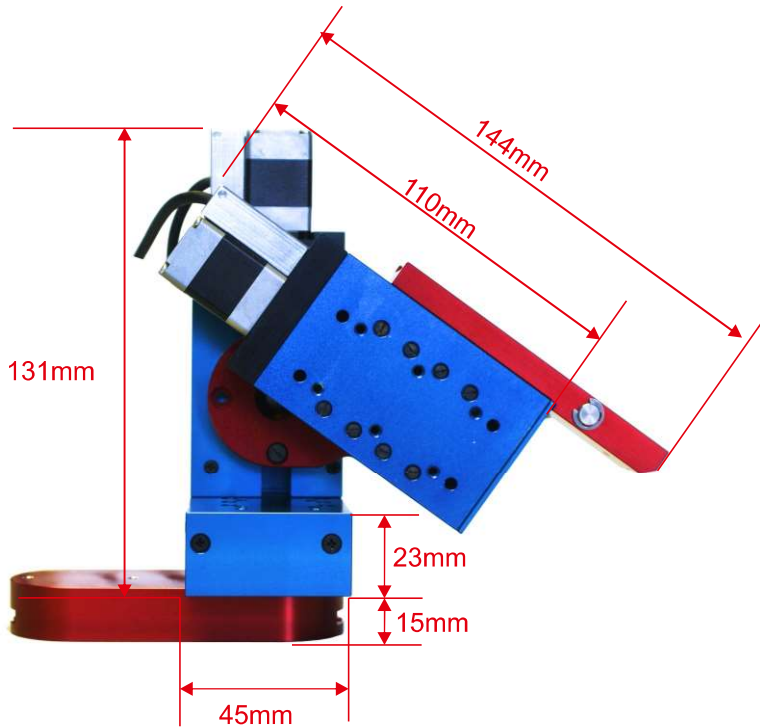


Unit Basic

The new entry of the LN manipulator system, the LN Basic manipulator. The new designed mechanic allows a more cost effective mounting of the manipuator. In combination with the new SM8 remote and SM8 control box we are able to provide a cost effective system, which is ideal for entry Patch Clamp recordings or Injection applications.

The manipulator is compatible with the SM7 system and available as a manual version.

Unit Basic



Contain:

- 3x Basic (X1/Y1/ Z1 axis)
- 1x Basic angle adapter
- 1x Basic column adapter
- 1x Basic Headstageholder
- 1x Ground set

Data:

- Traverse path : 23mm
- Motor resolution : 7,8nm
- Reproducibility : <2µm
- Dimension (LxBxH) : 144 x 110 x 131mm
- Weight : 1,2kg
- Spindle lead : 0,4mm per rotation

Basic RE / LE

Motorized:

Order-No.:

Right side: 210-100 000 0100-RE

Left side : 210-100 000 0100-LE

Basic RM / LM

Manual:

Order-No.:

210-100 000 0110-RM

210-100 000 0110-LM