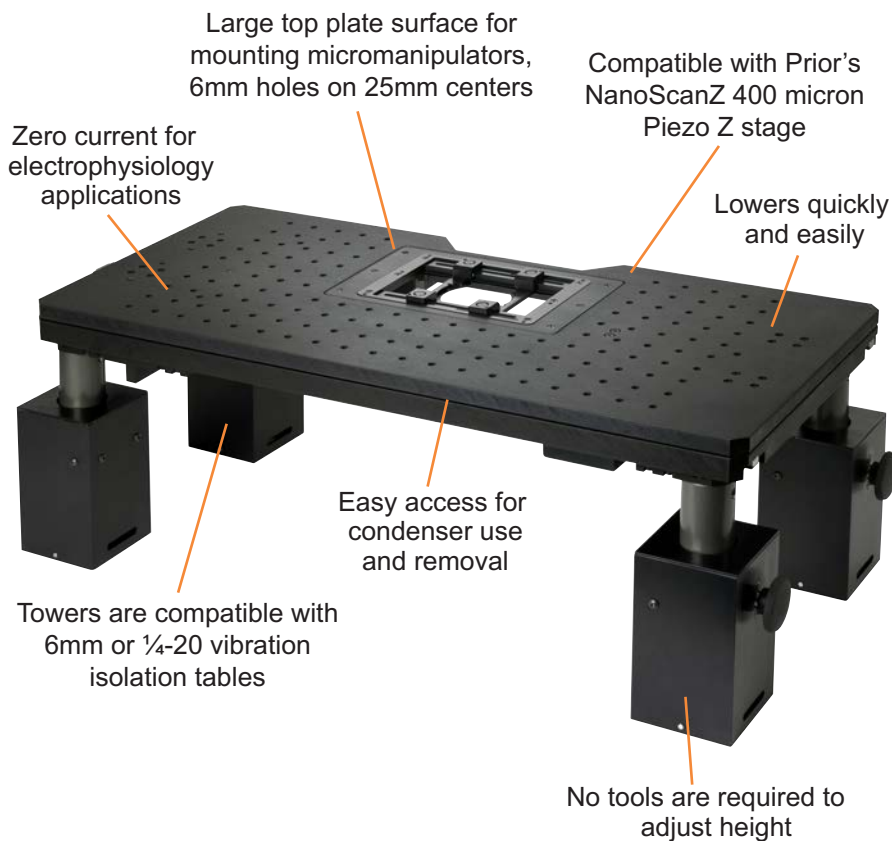


Motorized ZDeck Quick Adjust Platform System

For Nikon FN1/Ni, Olympus BX51WI/BX61WI and Zeiss Axio Examiner Microscopes



Prior Scientific's patent pending ZDeck Quick Adjust Platform enables users to increase their productivity by allowing them to image multiple areas of interest with speed and precision.

ZDeck Quick Adjust Platform features:

- Pneumatic piston towers which make raising and lowering the ZDeck virtually effortless.
- No tools are required to adjust the height.
- Change between thin sample and whole animal imaging height in seconds.
- ProScan™III controller and PS3J100 joystick provide ultr fine XY stage control via dual digipots.
- A completely integrated XY stage which provides a lower profile with a thinner cross section allowing for large samples.
- Oversized top surface for mounting additional micromanipulators and stereotaxic instruments.
- Fully encoder upgradable.
- Large sample area for mounting existing, heating, cooling, perfusion and incubation chambers.
- Compatible with most imaging software.

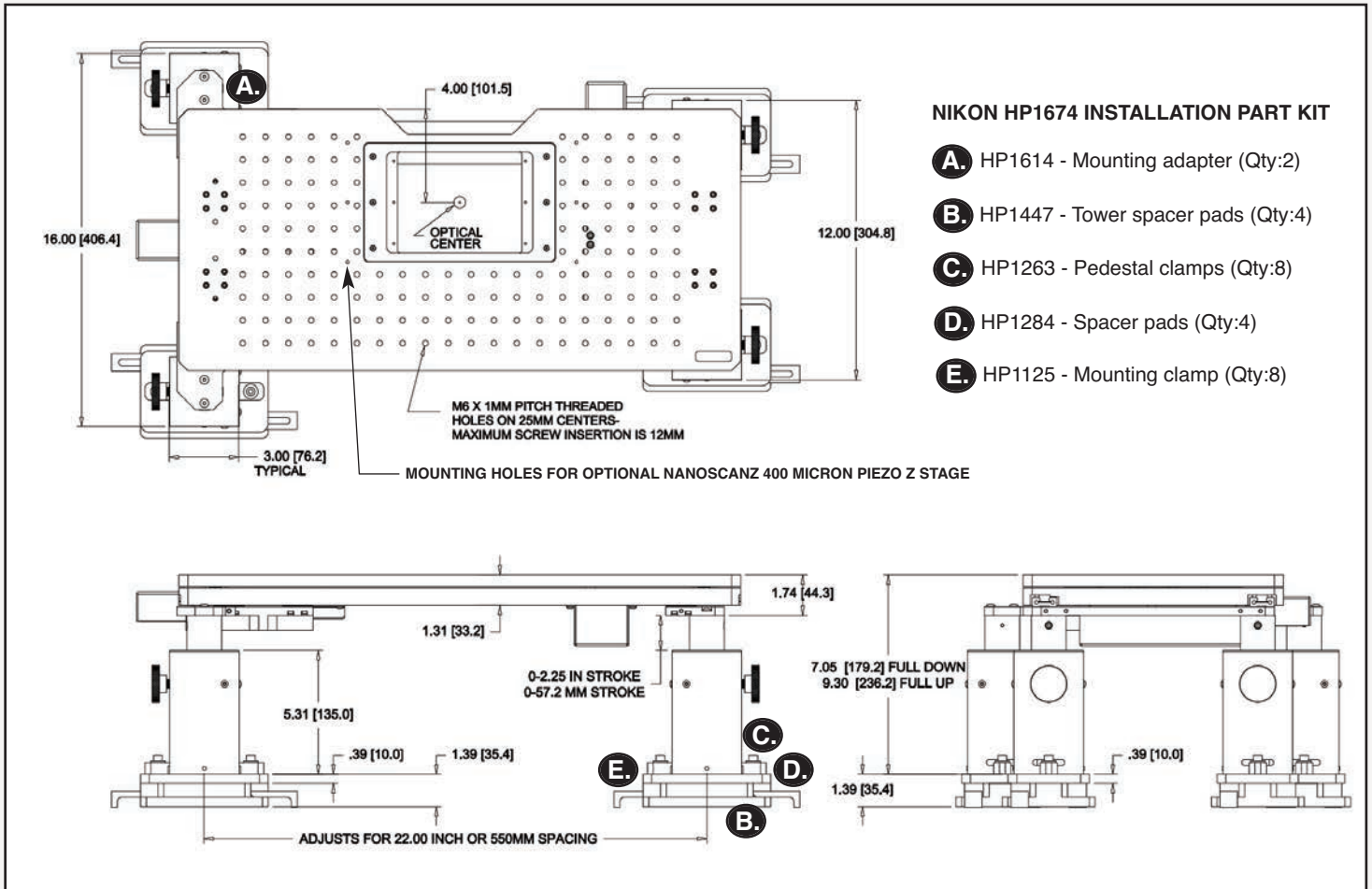
Features:

- Image multiple areas of interest with speed and precision
- Lowers quickly & easily to provide access for loading and unloading samples
- No tools are required to adjust height
- Changing between thin sample and whole animal imaging can be accomplished in seconds
- Pneumatic pistons make raising and lowering the unit effortless
- Provides sub micron repeatability and smooth movement
- Compatible with 6mm or 1/4-20 vibration isolation tables
- Compatible with Prior NanoScanZ Piezo Z stages
- Pillar spaces allow for Koehler illumination at a range of focus heights
- Optional encoders for highest precision available
- Compatible with multi-photon setup configurations

Motorized ZDeck Quick Adjust Platform System

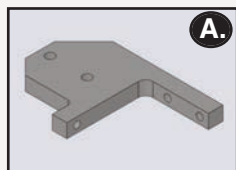
For Nikon FN1/Ni Microscopes

Outline Drawing and Part Number Information

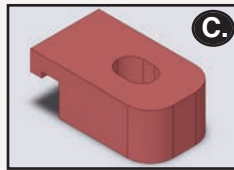


NIKON HP1674 INSTALLATION PART KIT

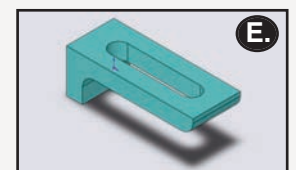
- A.** HP1614 - Mounting adapter (Qty:2)
- B.** HP1447 - Tower spacer pads (Qty:4)
- C.** HP1263 - Pedestal clamps (Qty:8)
- D.** HP1284 - Spacer pads (Qty:4)
- E.** HP1125 - Mounting clamp (Qty:8)



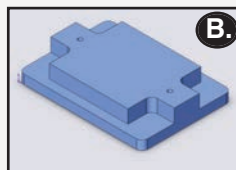
A. Mounting Adapter
Part Number: HP1614
Quantity: 2



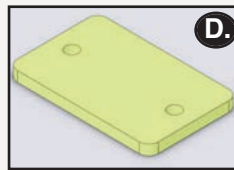
C. Pedestal Clamps
Part Number: HP1263
Quantity: 8



Mounting Clamps
Part Number: HP1125
Quantity: 8



B. Tower Spacer Pad
Part Number: HP1447
Quantity: 4



D. Spacer Pads
Part Number: HP1284
Quantity: 4



Worldwide distribution



Prior Scientific Ltd
Cambridge, UK

T. +44 (0) 1223 881711
E. uksales@prior.com

Prior Scientific Inc
Rockland, MA, USA

T. +1 781-878-8442
E. info@prior.com

Prior Scientific GmbH
Jena, Germany

T. +49 (0) 3641 675 650
E. jena@prior.com

Prior Scientific KK
Tokyo, Japan

T. +81-3-5652-8831
E. info-japan@prior.com

Motorized ZDeck Quick Adjust Platform System

For Nikon FN1/Ni Microscopes

Specifications

Part Number	Description
ZDeck travel	57mm
Vibration table compatibility	1/4-20 or 6mm
Load capacity	20kg
XY travel	65mm x 65mm
XY resolution	20 nanometers
XY speed	15mm/sec
Spacers provided	Four pillar spacers, four one inch spacers
ProScan controller power	Universal external power supply. Input 100-240V, 50/60Hz, Max 1.6A
ProScan computer interface	RS232/USB
ProScan communication protocol	8 bit word, 1 stop bit, no parity, no handshake

Adjustable Rise Platform Hardware Kit

Quantity	Description
8	1/4x20x1.5" screw
10	1/4x20x1.0" screw
1	3/16" allen wrench
8	.75mm thick M5 washer
1	5mm hex wrench
1	3mm allen wrench
10	1/4 standard flat washer
8	M4 x 10 screw
4	M4 x 30 screw
8	M5 x 14 screw
10	M6 x 25 screw
8	M6 x 35 screw

ZDN12MN Complete System Part List

Part Number	Description
ZDM1M2	Motorized ZDeck stage
HP1266	Hardware installation kit
HP1674	Nikon installation parts kit
H31XYZEF	ProScan controller
PS3J100	ProScan joystick
H473UP	Universal specimen holder
H230	Solid aluminum plate



Ordering Information

Part Number	Description
ZDN12MN for Nikon FN1/Ni	Prior high precision motorized ZDeck system complete with Prior ZDeck, motorized ProScan XY stage, ProScan III controller, PS3J100 joystick with dual digipot controls, universal holder, solid aluminum plate and pillar spacers.
ZDN12ME for Nikon FN1/Ni	Prior high precision motorized ZDeck system complete with Prior ZDeck, motorized ProScan XY stage with 50 nanometer linear scales, ProScan III controller, PS3J100 joystick with dual digipot controls, universal holder, solid aluminum plate and pillar spacers.

PRIOR
Scientific



Worldwide distribution

Prior Scientific Ltd
Cambridge, UK

T. +44 (0) 1223 881711
E. uksales@prior.com

Prior Scientific Inc
Rockland, MA, USA

T. +1 781-878-8442
E. info@prior.com

Prior Scientific GmbH
Jena, Germany

T. +49 (0) 3641 675 650
E. jena@prior.com

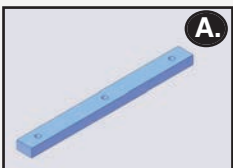
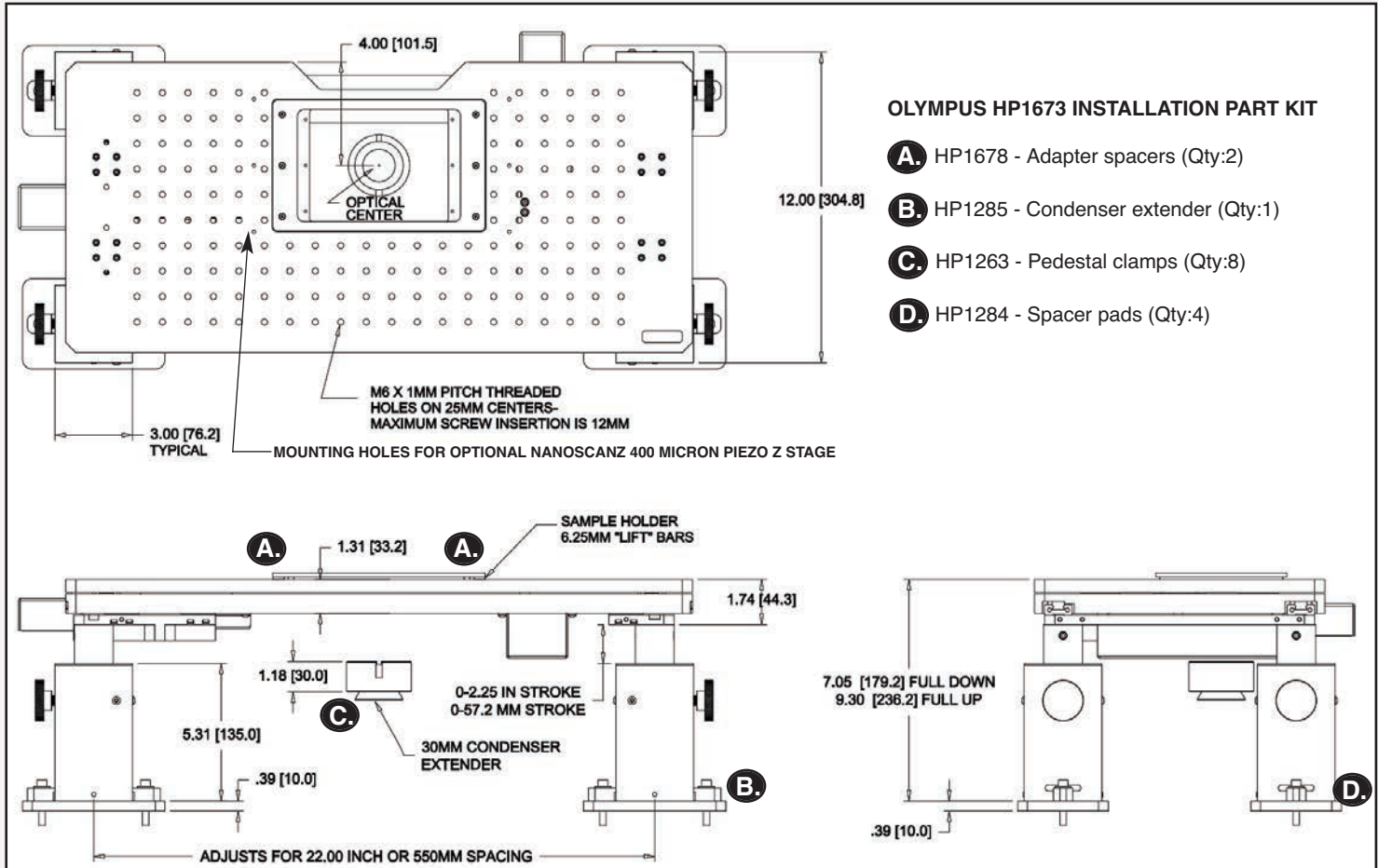
Prior Scientific KK
Tokyo, Japan

T. +81-3-5652-8831
E. info-japan@prior.com

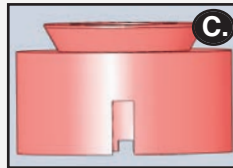
Motorized ZDeck Quick Adjust Platform System

For Olympus BX51WI/BX61WI Microscopes

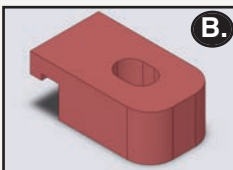
Outline Drawing and Part Number Information



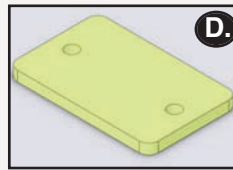
A. Adapter Spacers
Part Number: HP1678
Quantity: 2



C. Condenser Extender
Part Number: HP1285
Quantity: 1



B. Pedestal Clamps
Part Number: HP1263
Quantity: 8



D. Spacer Pads
Part Number: HP1284
Quantity: 4

PRIOR
Scientific

Worldwide distribution



Prior Scientific Ltd
Cambridge, UK

T. +44 (0) 1223 881711
E. uksales@prior.com

Prior Scientific Inc
Rockland, MA, USA

T. +1 781-878-8442
E. info@prior.com

Prior Scientific GmbH
Jena, Germany

T. +49 (0) 3641 675 650
E. jena@prior.com

Prior Scientific KK
Tokyo, Japan

T. +81-3-5652-8831
E. info-japan@prior.com

Motorized ZDeck Quick Adjust Platform System

For Olympus BX51WI/BX61WI Microscopes

Specifications

Part Number	Description
ZDeck travel	57mm
Vibration table compatibility	1/4-20 or 6mm
Load capacity	20kg
XY travel	65mm x 65mm
XY resolution	20 nanometers
XY speed	15mm/sec
Spacers provided	One condenser, four pillar spacers, two adapter spacers
ProScan controller power	Universal external power supply. Input 100-240V, 50/60Hz, Max 1.6A
ProScan computer interface	RS232/USB
ProScan communication protocol	8 bit word, 1 stop bit, no parity, no handshake

Adjustable Rise Platform Hardware Kit

Quantity	Description
8	1/4x20x1.5" screw
10	1/4x20x1.0" screw
1	3/16" allen wrench
8	.75mm thick M5 washer
1	5mm hex wrench
1	3mm allen wrench
10	1/4 standard flat washer
8	M4 x 10 screw
4	M4 x 30 screw
8	M5 x 14 screw
10	M6 x 25 screw
8	M6 x 35 screw

ZDP12MN Complete System Part List

Part Number	Description
ZDM1M2	Motorized ZDeck stage
HP1266	Hardware installation kit
HP1673	Olympus installation parts kit
H31XYZEF	ProScan controller
PS3J100	ProScan joystick
H473UP	Universal specimen holder
H230	Solid aluminum plate



Ordering Information

Part Number	Description
ZDP12MN for Olympus BX51WI/61WI	Prior high precision motorized ZDeck system complete with Prior ZDeck, motorized ProScan XY stage, ProScan III controller, PS3J100 joystick with dual digipot controls, universal holder, solid aluminum plate, condenser spacer and four 10mm pillar spacers.
ZDP12ME for Olympus BX51WI/61WI	Prior high precision motorized ZDeck system complete with Prior ZDeck, motorized ProScan XY stage with 50 nanometer linear scales, ProScan III controller, PS3J100 joystick with dual digipot controls, universal holder, solid aluminum plate, condenser spacer and four 10mm pillar spacers.

PRIOR
Scientific



Worldwide distribution

Prior Scientific Ltd
Cambridge, UK

T. +44 (0) 1223 881711
E. uksales@prior.com

Prior Scientific Inc
Rockland, MA, USA

T. +1 781-878-8442
E. info@prior.com

Prior Scientific GmbH
Jena, Germany

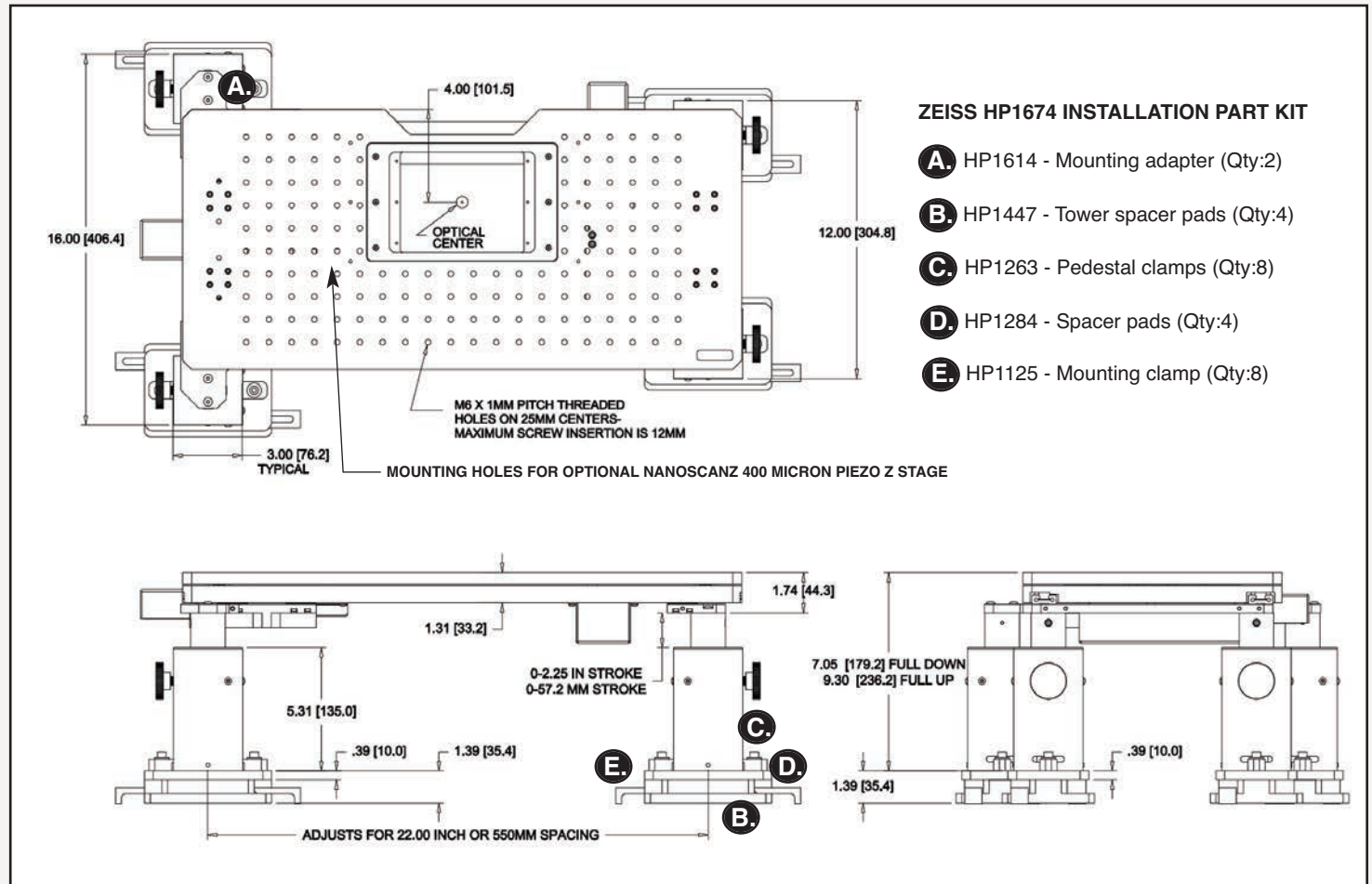
T. +49 (0) 3641 675 650
E. jena@prior.com

Prior Scientific KK
Tokyo, Japan

T. +81-3-5652-8831
E. info-japan@prior.com

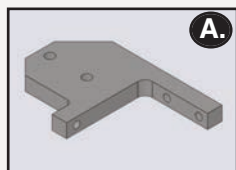
Motorized ZDeck Quick Adjust Platform System
For Zeiss Axio Examiner Microscopes

Outline Drawing and Part Number Information

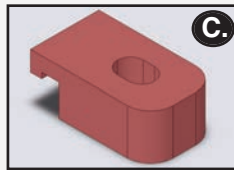


ZEISS HP1674 INSTALLATION PART KIT

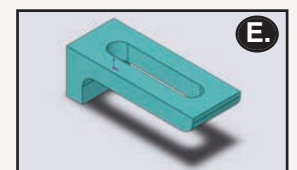
- A.** HP1614 - Mounting adapter (Qty:2)
- B.** HP1447 - Tower spacer pads (Qty:4)
- C.** HP1263 - Pedestal clamps (Qty:8)
- D.** HP1284 - Spacer pads (Qty:4)
- E.** HP1125 - Mounting clamp (Qty:8)



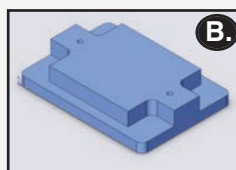
A. Mounting Adapter
Part Number: HP1614
Quantity: 2



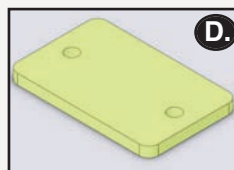
C. Pedestal Clamps
Part Number: HP1263
Quantity: 8



Mounting Clamps
Part Number: HP1125
Quantity: 8



B. Tower Spacer Pad
Part Number: HP1447
Quantity: 4



D. Spacer Pads
Part Number: HP1284
Quantity: 4



Motorized ZDeck Quick Adjust Platform System

For Zeiss Axio Examiner Microscopes

Specifications

Part Number	Description
ZDeck travel	57mm
Vibration table compatibility	1/4-20 or 6mm
Load capacity	20kg
XY travel	65mm x 65mm
XY resolution	20 nanometers
XY speed	15mm/sec
Spacers provided	Four 10mm pillar spacers, four one inch spacers
ProScan controller power	Universal external power supply. Input 100-240V, 50/60Hz, Max 1.6A
ProScan computer interface	RS232/USB
ProScan communication protocol	8 bit word, 1 stop bit, no parity, no handshake

Adjustable Rise Platform Hardware Kit

Quantity	Description
8	1/4x20x1.5" screw
10	1/4x20x1.0" screw
1	3/16" allen wrench
8	.75mm thick M5 washer
1	5mm hex wrench
1	3mm allen wrench
10	1/4 standard flat washer
8	M4 x 10 screw
4	M4 x 30 screw
8	M5 x 14 screw
10	M6 x 25 screw
8	M6 x 35 screw

ZDZ12MN Complete System Part List

Part Number	Description
ZDM1M2	Motorized ZDeck stage
HP1266	Hardware installation kit
HP1674	Zeiss installation parts kit
H31XYZEF	ProScan controller
PS3J100	ProScan joystick
H473UP	Universal specimen holder
H230	Solid aluminum plate



Ordering Information

Part Number	Description
ZDZ12MN for Zeiss Axio Examiner	Prior high precision motorized ZDeck system complete with Prior ZDeck, motorized ProScan XY stage, ProScan III controller, PS3J100 joystick with dual digipot controls, universal holder, solid aluminum plate and pillar spacers.
ZDZ12ME for Zeiss Axio Examiner	Prior high precision motorized ZDeck system complete with Prior ZDeck, motorized ProScan XY stage with 50 nanometer linear scales, ProScan III controller, PS3J100 joystick with dual digipot controls, universal holder, solid aluminum plate and pillar spacers.

PRIOR
Scientific



Worldwide distribution

Prior Scientific Ltd
Cambridge, UK

T. +44 (0) 1223 881711
E. uksales@prior.com

Prior Scientific Inc
Rockland, MA. USA

T. +1 781-878-8442
E. info@prior.com

Prior Scientific GmbH
Jena, Germany

T. +49 (0) 3641 675 650
E. jena@prior.com

Prior Scientific KK
Tokyo, Japan

T. +81-3-5652-8831
E. info-japan@prior.com

ProScan® III Microscopy Automation Control System

The ProScan III is an exceptionally versatile and powerful control system from Prior Scientific, able to control and coordinate a wide array of equipment, including motorised stages, focussing devices, filter wheels, shutters and illumination devices. With an elegant, modular design and extensive customisation options available, the ProScan III provides a powerful solution for the most demanding applications in automated microscopy.

- TTL commands can be sent to unit peripherals and external cameras; allowing for extremely fast control.
- Communicates via USB or RS232 (115200 baud)
- Compatible with a wide range of imaging software, allowing smooth integration of Prior components into the overall microscopy system.
- A Software Development Toolkit allows integration into third party software, and access to acceleration, speed and drive current is provided.
- Variants to support linear motor stages and encoded stages are available.
- Modular nature allows creation of a system perfectly suited to the precise needs of the end user. Ancillary boxes allow extensions in functionality to be accomplished quickly and easily.
- Compact design eases pressure on valuable lab space.
- Free firmware updates allow the user to benefit from the most up to date system performance.
-



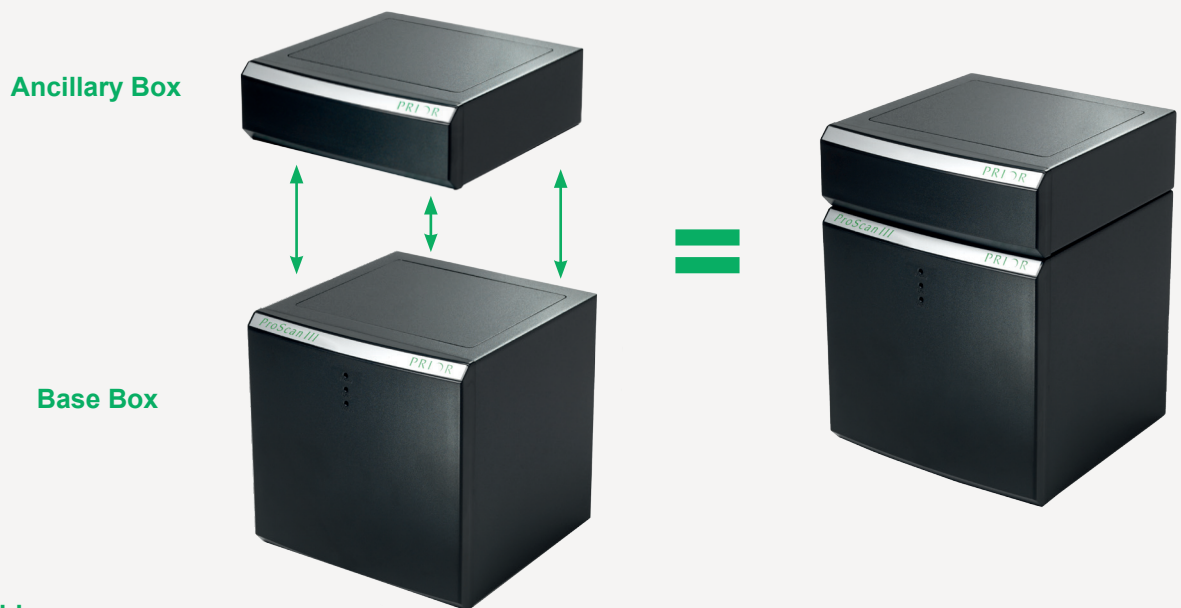
For more information on the whole ProScan range from Prior Scientific, please look at our ProScan III Brochure, or contact us at uksales@prior.com

ProScan III

Microscopy Automation Control Centre

Modularity

The ProScan III is designed to fit as closely as possible the exact requirements of the end user. A single 'base' unit is available. This can be extended with the addition of 'ancillary' boxes to widen the functionality of the system. For example, a base unit controlling the X, Y and Z axis can be extended with the addition of an ancillary unit controlling filter wheels and shutters.



Products available

Product	Description
V31XYZE	ProScan III controller controlling encoded XY stage and focus, with 2 x RS232, USB and programmable TTL. Supplied with Software Development Toolkit for easy software integration.
V31XYZEF	ProScan III controller controlling encoded XY stage, encoded focus, 3 filter wheels and 3 shutters, with 2 x RS232, USB and programmable TTL. Supplied with Software Development Toolkit for easy software integration.
V31F	ProScan III controller to control either focus, 2 x filter wheels and 3x shutters OR 3 x filter wheels and 3 x shutters with 2 x RS232, USB and programmable TTL. Supplied with Software Development Toolkit for easy software integration.
VLD31XYZ	ProScan III controller controlling a linear XY motor stage and focus with 2 x RS232, USB and programmable TTL. Supplied with Software Development Toolkit for easy software integration.
VLD31XYZF	ProScan III controller to control linear motor stage, Z focus, 3 x filter wheels and 3 x shutters with 2 x RS232, USB and programmable TTL. Supplied with Software Development Toolkit for easy software integration.
V31ADF	Ancillary box containing controller for 3 x filter wheels and 3 x shutters.
V31ADXYZE	Ancillary box containing controller for encoded XYZ control.

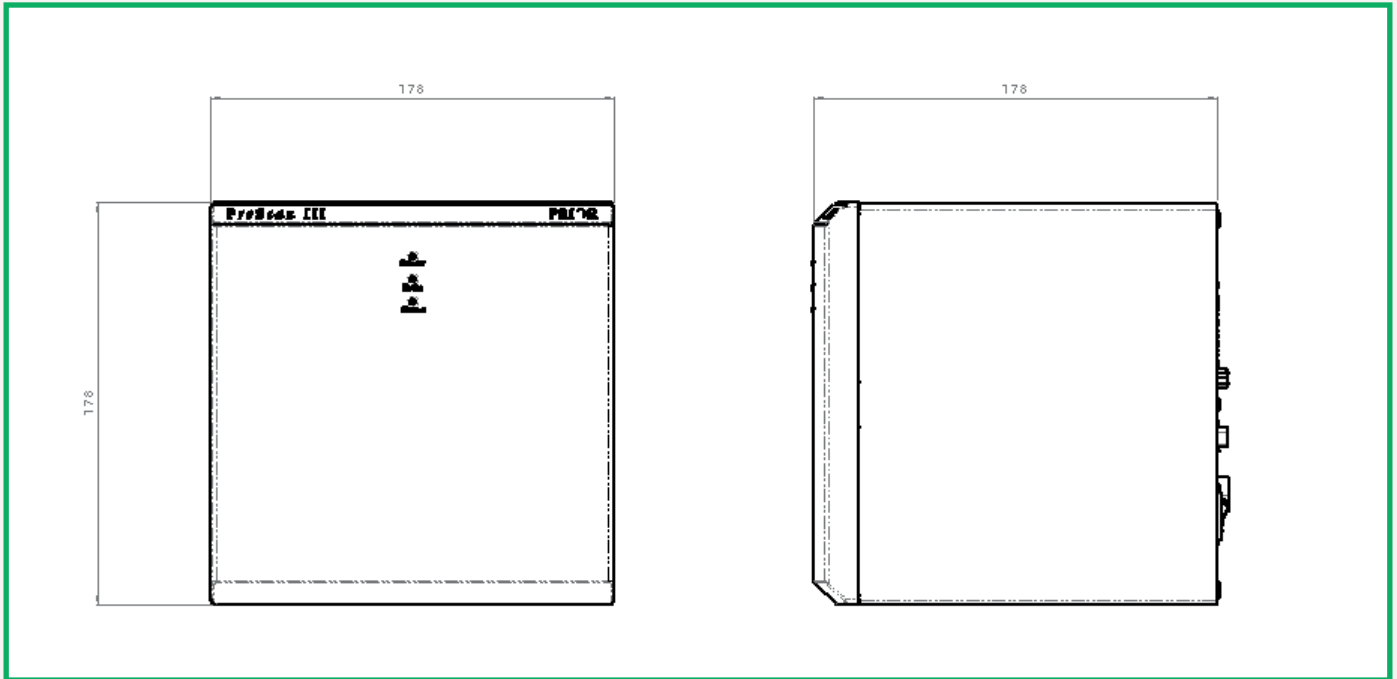
Specifications

Specification	Value
Power	Universal Mains Output 110/240 V AC 50-60 Hz
Computer Interface	USB (HID or Virtual COM), RS232
COM Port Communications Protocol	8 bit word 1 stop bit, no parity no handshake, baudrate options of 9600, 19200, 38400, 57600 and 115200
Dimensions	175 x 175 x 175 mm (Ancillary box adds 59 mm in height)
Weight	3 kg, ancillary box adds 1 kg

ProScan III

Microscopy Automation Control Centre

Dimensions



Worldwide distribution

Prior Scientific Ltd
Cambridge, UK
T. +44 (0) 1223 881 711
E. uksales@prior.com

Prior Scientific Inc
Rockland, MA USA
T. +1 781-878-8442
E. infor@prior.com

Prior Scientific GmbH
Jena, Germany
T. +49 (0) 3641 675 650
E. jena@prior.com

Prior Scientific KK
Tokyo, Japan
T. +81-3-5652-8831
E. info-japan@prior.com

Interactive Control Center (ICC)

PS3J100 Multifunctional Manual Controller for the ProScan™III Microscope Automation System

Features



The Interactive Control Center (ICC) is an ergonomically designed multifunctional manual controller for the ProScan™III microscope automation system. The ICC provides local control of accessories, including a stage, focus, filter wheels, shutters and the Lumen PRO range. The screen provides positional feedback while the joystick, button and digipots control accessories such as a stage, focus, filter wheels, and shutters.

Innovative features in the center allow the user to measure distances, label filter wheel positions with dye names (e.g., DAPI, FITC, etc.) and take fine control of the stage for intricate movements. Giving the user instant feedback as to what fluorophor the system is setup for and where the area's of interest are located on the stage. It also allows basic diagnostic of encoders, TTL and internal ProScan™III settings, such as axis movement speed.

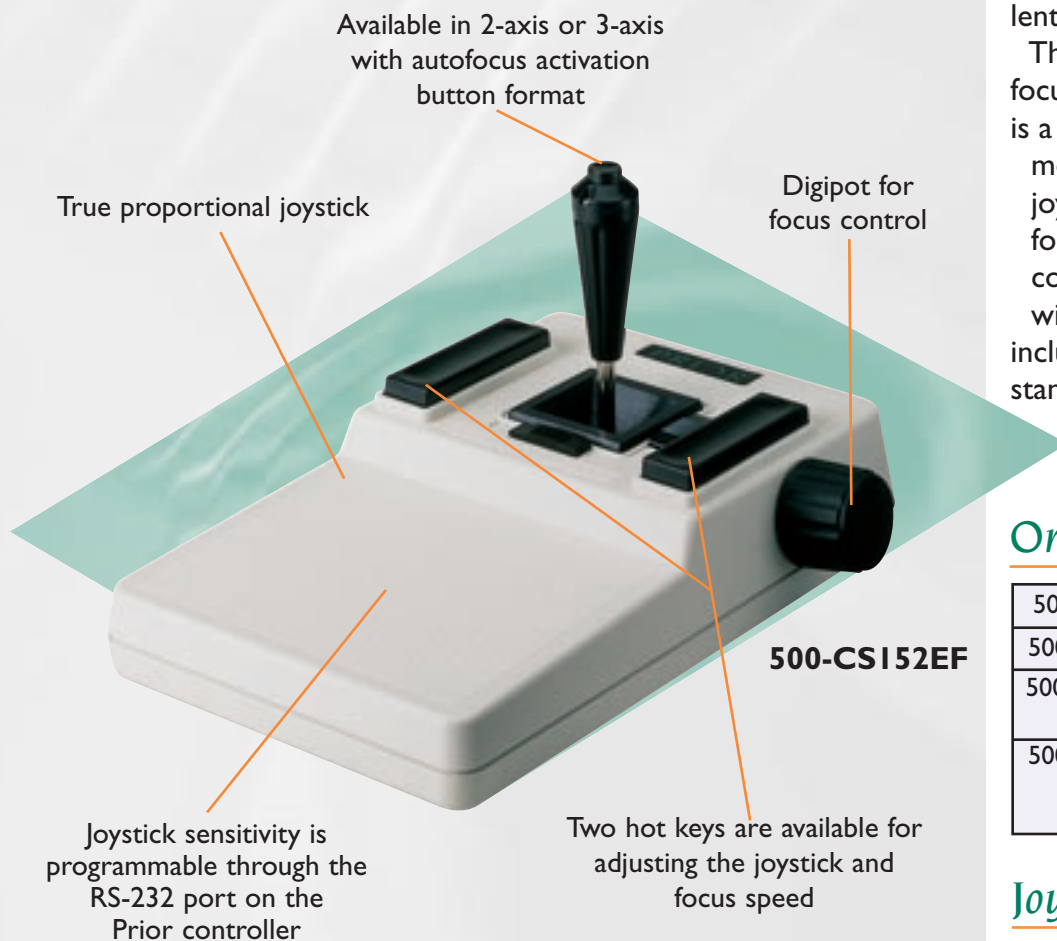
Features of the PS3J100:

- Positional feedback on all axes
- Digipot control of both X and Y axes independently for ultra fine movements
- Ergonomic design
- 137mm (W) x 243mm (L) x 71mm (H)
- Autodetection of accessories and configuration of display screens
- Speed control capability of joystick and focus motor
- Fast up and down Z focus buttons
- Manual control of X and Y via joystick or filter wheels via digipot knobs
- Configurable for OEM applications

Joysticks

Models **CSI52Z, CSI52V2, CSI52DP, CSI52EF**

Features



PRIOR
Scientific

The Prior Scientific joysticks provide fast, precise and responsive control for your Prior motorized stepper stage. The joysticks are true proportional joysticks, where small joystick deflections correspond to slow stage movements and large joystick deflections provide fast stage movement. All joysticks have excellent tactile feel and response.

The 500-CSI52Z joystick offers focus only control, the 500-CSI52V2 is a two-axis joystick (X and Y movement), while the 500-CSI52DP joystick controls XY with a digipot for Z control. The 500-CSI52EF, controls X and Y movement along with Z or focus movement and includes a standard autofocus activation button.

Ordering Information

500-CSI52Z	Joystick, focus only
500-CSI52V2	Joystick, XY
500-CSI52DP	Joystick, XY with digipot for Z
500-CSI52EF	Joystick, XY with digipot for Z and autofocus activation button

Joystick Specifications

Size	4.5"Wx8"Dx5"H
Weight	2 pounds